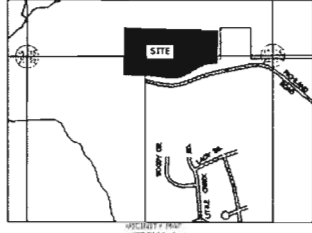




THIS SURVEY WAS MADE WITHOUT THE BENEFIT OF AN ATTORNEY'S TITLE OPINION OF TITLE COMMITMENT. THE SURVEYOR'S SEARCH OF PUBLIC RECORDS WAS LIMITED TO THOSE MATTERS AFFECTING THE BOUNDARIES OF THE SUBJECT PROPERTY ONLY. THERE MAY BE MATTERS OF RECORD, SUCH AS CONVEYANCES, EASEMENTS, RIGHT OF WAY, ETC. THAT AFFECT THE TITLE TO THE SUBJECT PROPERTY WHICH ARE NOT KNOWN TO THE SURVEYOR AND NOT DISCLOSED BY THIS SURVEY



JEDD LAND CO, LLC
P.O. BOX 1820
PHENIX CITY, AL 36867

LUNDY WEST SUBDIVISION

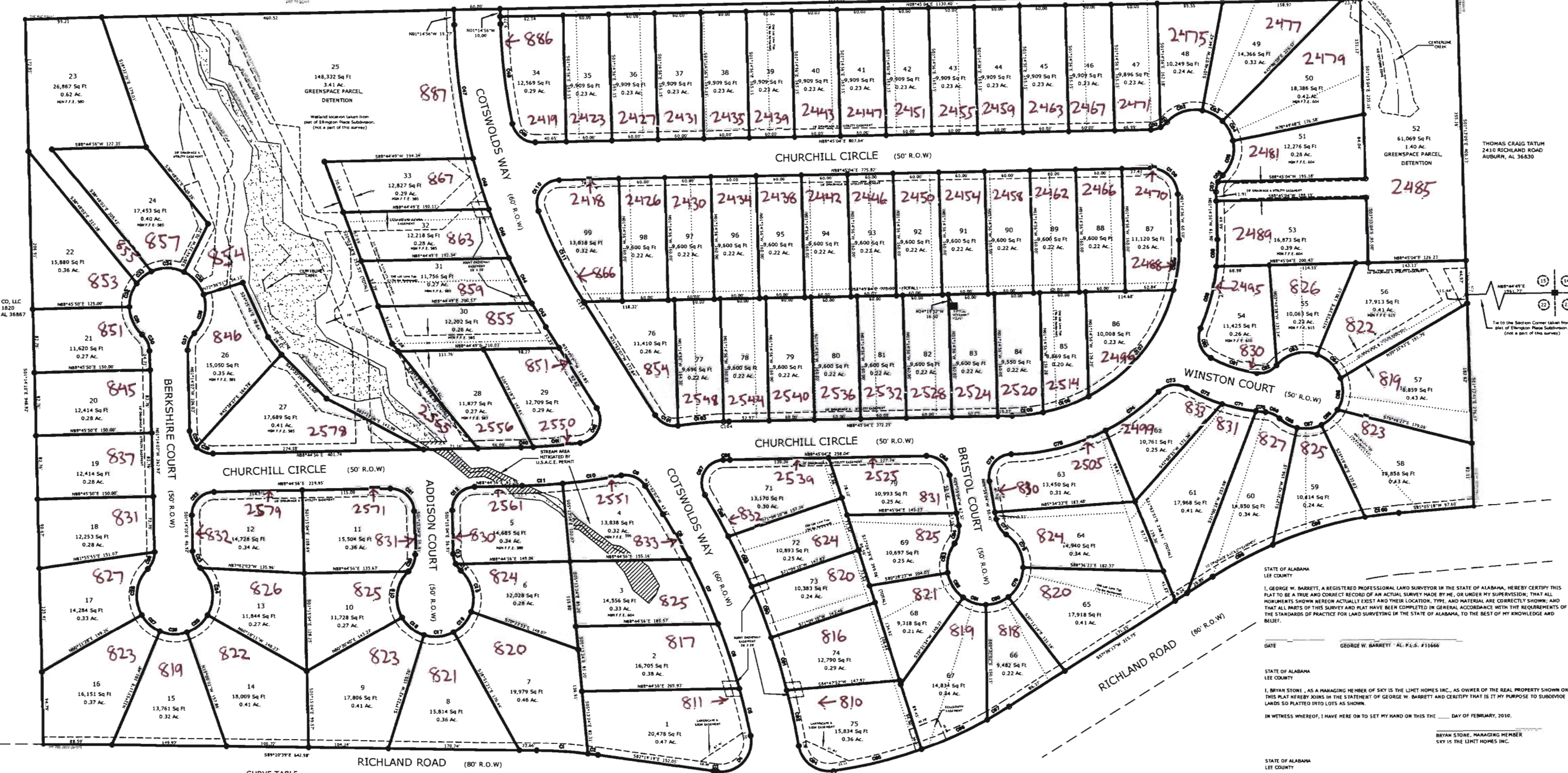
DEPARTMENT OF PLANNING
RECEIVED
A RESUBDIVISION OF
ELLINGTON PLACE SUBDIVISION
BEING A PART OF SECTIONS 15 & 22 TOWNSHIP 19 NORTH, RANGE 25 EAST
AUBURN, LEE COUNTY, ALABAMA
DATE: 3/29/10
CASE NO. 2010 00111

ORIGINAL PLAN OF ELLINGTON PLACE SUBDIVISION RECORDED IN PLAT BOOK 31, PAGE 102, OFFICE OF JUDGE OF PROBATE OF LEE COUNTY, ALABAMA

OWNER / DEVELOPER:
The Sky is the Limit Homes, Inc.
404 South 8th Street
Opelika, AL 36801

LAND SURVEYOR:
George W. Barrett
Ala. Reg. P.L.S. No. 11666
Barrett-Simpson, Inc.
223 S. 9th Street
Opelika, AL 36801

ADDRESS/E911
MODIFICATION



CURVE TABLE

CURVE	LENGTH	RADIUS	CHORD	CHORD DIRECTION	CURVE	LENGTH	RADIUS	CHORD	CHORD DIRECTION
C1	10.00	10.00	10.00	N0°0'0"E	C1	10.00	10.00	10.00	N0°0'0"E
C2	12.57	12.57	12.57	N0°0'0"E	C2	12.57	12.57	12.57	N0°0'0"E
C3	15.71	15.71	15.71	N0°0'0"E	C3	15.71	15.71	15.71	N0°0'0"E
C4	19.40	19.40	19.40	N0°0'0"E	C4	19.40	19.40	19.40	N0°0'0"E
C5	23.65	23.65	23.65	N0°0'0"E	C5	23.65	23.65	23.65	N0°0'0"E
C6	28.48	28.48	28.48	N0°0'0"E	C6	28.48	28.48	28.48	N0°0'0"E
C7	33.91	33.91	33.91	N0°0'0"E	C7	33.91	33.91	33.91	N0°0'0"E
C8	39.95	39.95	39.95	N0°0'0"E	C8	39.95	39.95	39.95	N0°0'0"E
C9	46.61	46.61	46.61	N0°0'0"E	C9	46.61	46.61	46.61	N0°0'0"E
C10	53.91	53.91	53.91	N0°0'0"E	C10	53.91	53.91	53.91	N0°0'0"E
C11	61.85	61.85	61.85	N0°0'0"E	C11	61.85	61.85	61.85	N0°0'0"E
C12	70.44	70.44	70.44	N0°0'0"E	C12	70.44	70.44	70.44	N0°0'0"E
C13	79.68	79.68	79.68	N0°0'0"E	C13	79.68	79.68	79.68	N0°0'0"E
C14	89.58	89.58	89.58	N0°0'0"E	C14	89.58	89.58	89.58	N0°0'0"E
C15	100.14	100.14	100.14	N0°0'0"E	C15	100.14	100.14	100.14	N0°0'0"E
C16	111.37	111.37	111.37	N0°0'0"E	C16	111.37	111.37	111.37	N0°0'0"E
C17	123.27	123.27	123.27	N0°0'0"E	C17	123.27	123.27	123.27	N0°0'0"E
C18	135.84	135.84	135.84	N0°0'0"E	C18	135.84	135.84	135.84	N0°0'0"E
C19	149.08	149.08	149.08	N0°0'0"E	C19	149.08	149.08	149.08	N0°0'0"E
C20	162.99	162.99	162.99	N0°0'0"E	C20	162.99	162.99	162.99	N0°0'0"E
C21	177.57	177.57	177.57	N0°0'0"E	C21	177.57	177.57	177.57	N0°0'0"E
C22	192.82	192.82	192.82	N0°0'0"E	C22	192.82	192.82	192.82	N0°0'0"E
C23	208.74	208.74	208.74	N0°0'0"E	C23	208.74	208.74	208.74	N0°0'0"E
C24	225.33	225.33	225.33	N0°0'0"E	C24	225.33	225.33	225.33	N0°0'0"E
C25	242.60	242.60	242.60	N0°0'0"E	C25	242.60	242.60	242.60	N0°0'0"E
C26	260.55	260.55	260.55	N0°0'0"E	C26	260.55	260.55	260.55	N0°0'0"E
C27	279.18	279.18	279.18	N0°0'0"E	C27	279.18	279.18	279.18	N0°0'0"E
C28	298.49	298.49	298.49	N0°0'0"E	C28	298.49	298.49	298.49	N0°0'0"E
C29	318.48	318.48	318.48	N0°0'0"E	C29	318.48	318.48	318.48	N0°0'0"E
C30	339.15	339.15	339.15	N0°0'0"E	C30	339.15	339.15	339.15	N0°0'0"E
C31	360.50	360.50	360.50	N0°0'0"E	C31	360.50	360.50	360.50	N0°0'0"E
C32	382.53	382.53	382.53	N0°0'0"E	C32	382.53	382.53	382.53	N0°0'0"E
C33	405.24	405.24	405.24	N0°0'0"E	C33	405.24	405.24	405.24	N0°0'0"E
C34	428.63	428.63	428.63	N0°0'0"E	C34	428.63	428.63	428.63	N0°0'0"E
C35	452.70	452.70	452.70	N0°0'0"E	C35	452.70	452.70	452.70	N0°0'0"E
C36	477.44	477.44	477.44	N0°0'0"E	C36	477.44	477.44	477.44	N0°0'0"E
C37	502.85	502.85	502.85	N0°0'0"E	C37	502.85	502.85	502.85	N0°0'0"E
C38	528.93	528.93	528.93	N0°0'0"E	C38	528.93	528.93	528.93	N0°0'0"E
C39	555.67	555.67	555.67	N0°0'0"E	C39	555.67	555.67	555.67	N0°0'0"E
C40	583.07	583.07	583.07	N0°0'0"E	C40	583.07	583.07	583.07	N0°0'0"E
C41	611.13	611.13	611.13	N0°0'0"E	C41	611.13	611.13	611.13	N0°0'0"E
C42	639.84	639.84	639.84	N0°0'0"E	C42	639.84	639.84	639.84	N0°0'0"E
C43	669.20	669.20	669.20	N0°0'0"E	C43	669.20	669.20	669.20	N0°0'0"E
C44	699.21	699.21	699.21	N0°0'0"E	C44	699.21	699.21	699.21	N0°0'0"E
C45	729.87	729.87	729.87	N0°0'0"E	C45	729.87	729.87	729.87	N0°0'0"E
C46	761.18	761.18	761.18	N0°0'0"E	C46	761.18	761.18	761.18	N0°0'0"E
C47	793.14	793.14	793.14	N0°0'0"E	C47	793.14	793.14	793.14	N0°0'0"E
C48	825.75	825.75	825.75	N0°0'0"E	C48	825.75	825.75	825.75	N0°0'0"E
C49	859.00	859.00	859.00	N0°0'0"E	C49	859.00	859.00	859.00	N0°0'0"E
C50	892.89	892.89	892.89	N0°0'0"E	C50	892.89	892.89	892.89	N0°0'0"E
C51	927.42	927.42	927.42	N0°0'0"E	C51	927.42	927.42	927.42	N0°0'0"E
C52	962.59	962.59	962.59	N0°0'0"E	C52	962.59	962.59	962.59	N0°0'0"E
C53	998.40	998.40	998.40	N0°0'0"E	C53	998.40	998.40	998.40	N0°0'0"E
C54	1034.84	1034.84	1034.84	N0°0'0"E	C54	1034.84	1034.84	1034.84	N0°0'0"E
C55	1071.91	1071.91	1071.91	N0°0'0"E	C55	1071.91	1071.91	1071.91	N0°0'0"E
C56	1109.60	1109.60	1109.60	N0°0'0"E	C56	1109.60	1109.60	1109.60	N0°0'0"E
C57	1147.91	1147.91	1147.91	N0°0'0"E	C57	1147.91	1147.91	1147.91	N0°0'0"E
C58	1186.84	1186.84	1186.84	N0°0'0"E	C58	1186.84	1186.84	1186.84	N0°0'0"E
C59	1226.39	1226.39	1226.39	N0°0'0"E	C59	1226.39	1226.39	1226.39	N0°0'0"E
C60	1266.56	1266.56	1266.56	N0°0'0"E	C60	1266.56	1266.56	1266.56	N0°0'0"E
C61	1307.35	1307.35	1307.35	N0°0'0"E	C61	1307.35	1307.35	1307.35	N0°0'0"E
C62	1348.76	1348.76	1348.76	N0°0'0"E	C62	1348.76	1348.76	1348.76	N0°0'0"E
C63	1390.79	1390.79	1390.79	N0°0'0"E	C63	1390.79	1390.79	1390.79	N0°0'0"E
C64	1433.44	1433.44	1433.44	N0°0'0"E	C64	1433.44	1433.44	1433.44	N0°0'0"E
C65	1476.71	1476.71	1476.71	N0°0'0"E	C65	1476.71	1476.71	1476.71	N0°0'0"E
C66	1520.60	1520.60	1520.60	N0°0'0"E	C66	1520.60	1520.60	1520.60	N0°0'0"E
C67	1565.11	1565.11	1565.11	N0°0'0"E	C67	1565.11	1565.11	1565.11	N0°0'0"E
C68	1610.24	1610.24	1610.24	N0°0'0"E	C68	1610.24	1610.24	1610.24	N0°0'0"E
C69	1655.99	1655.99	1655.99	N0°0'0"E	C69	1655.99	1655.99	1655.99	N0°0'0"E
C70	1702.36	1702.36	1702.36	N0°0'0"E	C70	1702.36	1702.36	1702.36	N0°0'0"E
C71	1749.35	1749.35	1749.35	N0°0'0"E	C71	1749.35	1749.35	1749.35	N0°0'0"E
C72	1796.96	1796.96	1796.96	N0°0'0"E	C72	1796.96	1796.96	1796.96	N0°0'0"E
C73	1845.19	1845.19	1845.19	N0°0'0"E	C73	1845.19	1845.19	1845.19	N0°0'0"E
C74	1894.04	1894.04	1894.04	N0°0'0"E	C74	1894.04	1894.04	1894.04	N0°0'0"E
C75	1943.51	1943.51	1943.51	N0°0'0"E	C75	1943.51	1943.51	1943.51	N0°0'0"E
C76	1993.60	1993.60	1993.60	N0°0'0"E	C76	1993.60	1993.60	1993.60	N0°0'0"E
C77	2044.31	2044.31	2044.31	N0°0'0"E	C77	2044.31	2044.31	2044.31	N0°0'0"E
C78	2095.64	2095.64	2095.64	N0°0'0"E	C78	2095.64	2095.64	2095.64	N0°0'0"E
C79	2147.59	2147.59	2147.59	N0°0'0"E	C79	2147.59	2147.59	2147.59	N0°0'0"E
C80	2199.16	2199.16	2199.16	N0°0'0"E	C80	2199.16	2199.16	2199.16	N0°0'0"E
C81	2251.35	2251.35	2251.35	N0°0'0"E	C81	2251.35	2251.35	2251.35	N0°0'0"E
C82	2304.16	2304.16	2304.16	N0°0'0"E	C82	2304.16	2304.16	2304.16	N0°0'0"E
C83	2357.59	2357.59	2357.59	N0°0'0"E	C83	2357.59	2357.59	2357.59	N0°0'0"E
C84	2411.64	2411.64	2411.64	N0°0'0"E	C84	2411.64	2411.64	2411.64	N0°0'0"E
C85	2466.31	2466.31	2466.31	N0°0'0"E	C85	2466.31	2466.31	2466.31	N0°0'0"E
C86	2521.60	2521.60	2521.60	N0°0'0"E	C86	2521.60	2521.60	2521.60	N0°0'0"E
C87	2577.51	2577.51	2577.51	N0°0'0"E	C87	2577.51	2577.51	2577.51	N0°0'0"E
C88	2634.04	2634.04	2634.04	N0°0'0"E	C88	2634.04	2634.04	2634.04	N0°0'0"E
C89	2691.19	2691.19	2691.19	N0°0'0"E	C89	2691.19	2691.19	2691.19	N0°0'0"E
C90	2748.96	2748.96	2748.96	N0°0'0"E	C90	2748.96	2748.96	2748.96	N0°0'0"E
C91	2807.35	2807.35	2807.35	N0°0'0"E	C91	2807.35	2807.35	2807.35	N0°0'0"E
C92	2866.36	2866.36	2866.36	N0°0'0"E	C92	2866.36	2866.36	2866.36	N0°0'0"E
C93	2925.99	2925.99	2925.99	N0°0'0"E	C93	2925.99	2925.99	2925.99	N0°0'0"E
C94	2986.24	2986.24	2986.24	N0°0'0"E	C94	2986.24	2986.24	2986.24	N0°0'0"E
C95	3047.11	3047.11	3047.11	N0°0'0"E	C95	3047.11	3047.11	3047.11	N0°0'0"E
C96	3108.60	3108.60	3108.60	N0°0'0"E	C96	3108.60	3108.60	3108.60	N0°0'0"E
C97	3170.71	3170.71	3170.71	N0°0'0"E	C97	3170.71	3170.71	3170.71	N0°0'0"E
C98	3233.44	3233.44	3233.44	N0°0'0"E	C98	3233.44	3233.44	3233.44	N0°0'0"E
C99	3296.79	3296.79	3296.79	N0°0'0"E	C99	3296.79	3296.79	3296.79	N0°0'0"E
C100	3360.76	3360.76	3360.76	N0°0'0"E	C100	3360.76	3360.76	3360.76	N0°0'0"E

NOTES:

- THIS PARCEL IS SUBJECT TO ANY EASEMENTS, RIGHTS-OF-WAY, OR OTHER RESTRICTIONS ON RECORD.
- BEARING, BASE AND NORTH ARE BASED ON GRID NORTH, ETC. BY D.B. ALABAMA EAST STATE PLANE COORDINATE SYSTEM.
- ALL EASEMENTS SHALL REMAIN UNOBTAINED BY FRICES OR OTHER STRUCTURES. NO PERMANENT STRUCTURES MAY BE CONSTRUCTED OR PLACED ON EASEMENTS. FRICES MAY BE ERECTED TEMPORARILY ACCORDING TO THE REQUIREMENTS OF A PERMITS IF THE ACCESS GATE IS INSTALLED AT THE ACCESS GATE. NO TO BE LOCATED THERE MUST BE A CITY APPROVED LOCK INSTALLED IN CONSTRUCTION WITH THE OWNER'S LOCK. NO TILES SHALL BE PLACED WITHIN 10' OF UTILITIES.
- ALL AREAS DESIGNATED AS GREENSPACE ARE NON-BUILDABLE AND SHALL BE LEFT UNDEVELOPED, EXCEPT IN AREAS USED FOR DETENTION (LOTS 2 AND 3).
- A 11 FOOT WIDE NO DISTURB BUFFER EXISTS ALONG THE EXISTING CREEK/DEVELOP AREA.
- ALL PROPERTY CORNERS WILL BE MARKED WITH 1/2" REBAR WITH CHAIN OR CAP, CAST/IRON, UNLESS OTHERWISE NOTED.
- ALL GREENSPACE AND OPEN SPACE PARCELS WILL BE MAINTAINED BY THE LUNDY WEST HOMEOWNERS ASSOCIATION.
- THE DRIVEWAYS FOR LOTS 4, 15, 24, 71, AND 89 MUST ACCESS CHURCHILL CIRCLE. THE DRIVEWAYS FOR LOTS 1 AND 11 MUST ACCESS ADDISON COURT